



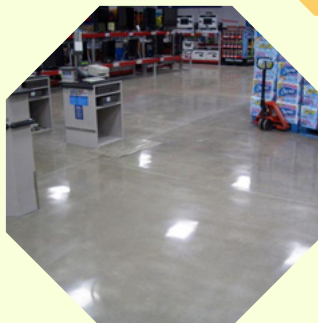
CONCRETE FLOORING PRODUCTS

Polithium™

**The Advanced Nano technology
penetrating lithium silicate formulation**

PRODUCT DESCRIPTION

Polithium™ is an advanced ready-to-use lithium silicate designed specifically for steel-troweled or tight finished concrete floors. This is a penetrating treatment that reacts with the free lime in cured concrete to quickly create a harder, denser surface, achieving 100% dust proof environment. This densifier is safer and easier to apply than conventional silicate hardeners. No residue to dispose off. No water to clean after application. Suitable for concrete polishing & creates glossy surfaces.



ADVANTAGES:

- Easy, one-step application. No scrubbing. No flushing.
- No caustic wastewater.
- Penetrates deep and reacts quickly to produce better initial and ultimate hardness.
- Provides better abrasion resistance than conventional liquid hardeners.
- Can be polished for a quick sheen.
- Breathable and UV stable. Will not pale, discolour, peel or flake. one time application.
- Treated surfaces are easier to maintain

Technical Properties :-

Total Solid Content :	24%
Specific Gravity @ 25 C :	1.106 +/- 0.02
PH :	11
VOC content :	Non

Clean Up :-

Use soap & water to clean tools & equipments. Although Polithium is non toxic & environmentally safe avoid cleaning by citrus or butyl compounds. Dispose of according to local regulations.

Storage :-

Store in cool dry place away from direct sunlight. Keep away from freezing.

Application Instructions

- Surfaces to be treated must be clean, dry and absorbent.
- Confirm surface absorbency with a light water spray.
- If surfaces designated for treatment do not wet uniformly, use the appropriate surface preparations by cleaning or mechanical process to remove remaining surface contaminants.
- Spray applicators equipped with low volume airless sprayers have proven effective for application of this product.
- If the desired surface finish requires mechanical removal of the top layer of cement paste, best results are achieved by grinding the cured concrete surface by using 50–200 grit diamond abrasives, before applying PolithiuM™ densifier.
- Apply sufficient product so the surface remains wet for 20-30 minutes.
- Always maintain a wet edge when applying and avoid spraying on surface where drying begins



Application Rate :-

New steel troweled floors — 7-10 Sqmtr/ Litre

Existing floors — 5-8 Sqmtr / Litre

However the texture & porosity of the concrete surface will determine the final coverage rates. Porous concrete surface may require additional applications.

PolithiuM™ Densifier is suitable for use with wet or dry grinding and polishing procedures.

Waste water generated by wet grinding or polishing procedures should be collected and disposed off properly

Maintenance after treatment:-

- Remove surface dust daily by using a micro fibre pad or dry dust mop. OR by auto scrubber.
- Dry buff with a high-speed burnisher to refresh gloss. Regular maintenance & cleaning will improve surface shine.
- Do not use acidic cleaners. PolithiuM Densifier will improve the resistance of concrete surfaces to staining,
- Acid concentrates and acidic foods may etch the floor and leave a residual stain. Clean up such spills quickly to minimise any potential for surface damage.
- Owner is responsible to make his own tests to determine the suitability of this product for his particular purpose.